



Safe Haven Maritime Pte Ltd



Safe Haven Singapore Pte Ltd
+65 9731 8922
layup@safehaven-singapore.com
www.safehaven-singapore.com



Safe Haven Maritime Pte Ltd has a large fully licensed dedicated short-, medium-, and long-term anchorage in Batam located conveniently close to Singapore.

No restrictions on reduced manning below minimum safe manning (reduced manning cost as well as possible return of insurance calls).

The UK Hydrographic Office has issued Notice to Mariners and has duly marked the dedicated anchorage area on their nautical charts (#3948)

The anchorage is located on the Equator with ideal weather conditions and water depths for anchoring tonnage of any type and size.

Inspected and approved by member of IACS (International Association of Classification Societies).

Excellent holding ground.

Safe distance between anchored vessels.

Security and emergency response.

Complete agency and chandlery services along with launch transportation.

Competitive prices





The environmental conditions at the anchorage area are ideal for vessels on single anchor.

There are no adverse weather effects. Typhoons which affect most other areas in Asia are non-existent due to the anchorage's close proximity to the Equator.

Wave height effects is minimal with waves seldom exceeding 1.0-1.5 meters.

There are no swells of any noticeable effect at the anchorage.

The anchorage is easily accessible with pilot which is available for approach and anchoring operations.

The tide condition is diurnal ranging within approximately 3.2 meters.

The effects of the current as caused by tide changes can reach about 2.3 knots with direction running SSE/NNW.

The anchorage is easily accessible with pilot which is available for approach and anchoring operations.

Water depth: 28-32 meters.

Holding ground: Excellent with firm mud (based on bottom samples and experience)

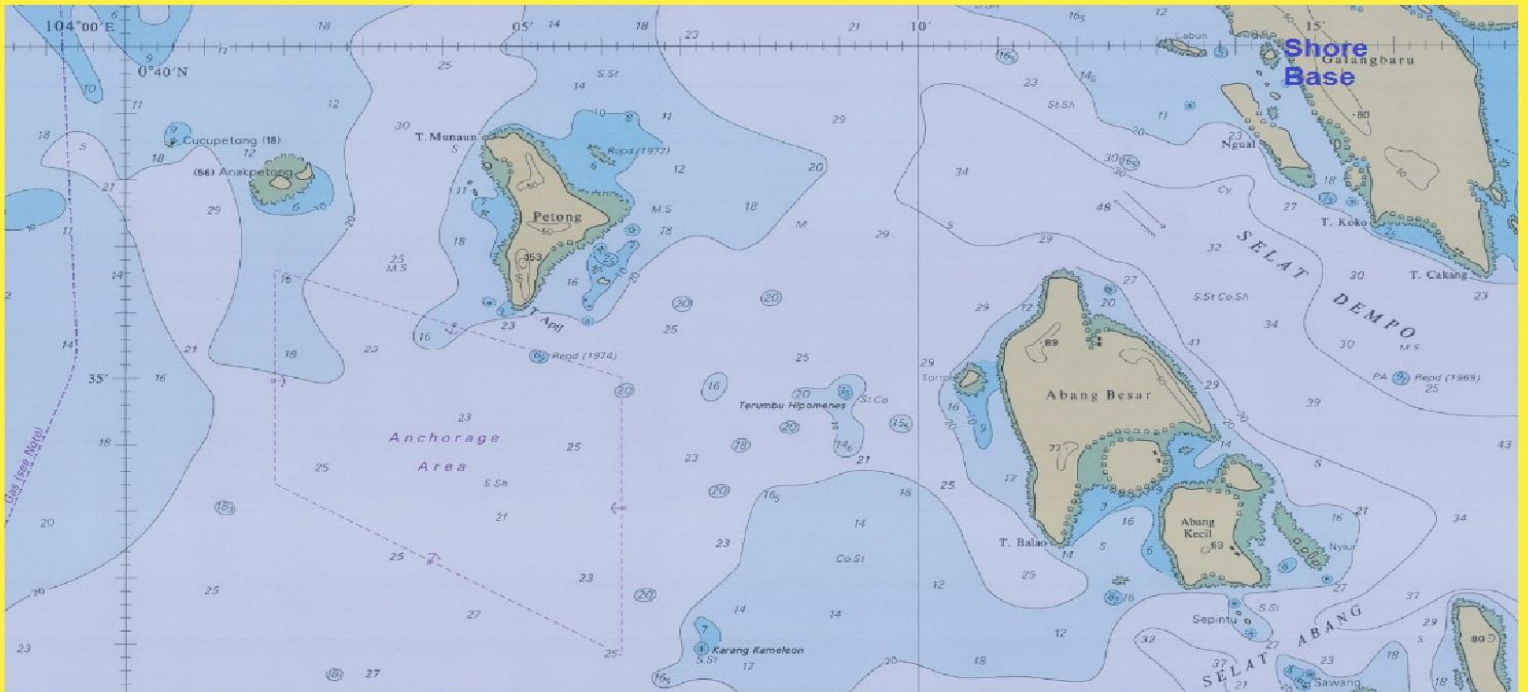


Introduction



Safe Haven Singapore Pte Ltd
+65 9731 8922
layup@safehaven-singapore.com
www.safehaven-singapore.com

Introduction



Safe Haven Singapore Pte Ltd
+65 9731 8922
layup@safehaven-singapore.com
www.safehaven-singapore.com

Security



Our Shore Base is located within line of sight of the anchorage, and is manned 24/7. Communication with vessels is maintained via VHF 24/7.

We have close cooperation with the local Coastguard, Navy, and Marine Police as well as the national Navy, Police and intelligence services who all are available to us.

Our Emergency Response Plans (ERP) covers illegal boarding with strict security and response procedures.



Safe Haven Singapore Pte Ltd
+65 9731 8922
layup@safehaven-singapore.com
www.safehaven-singapore.com

Facilities



Batam has been steadily growing as an important maritime/offshore repair and new building centre with its close proximity to Singapore and the main East/West shipping routes. Highly qualified low-cost manpower is available in Batam.

Batam has more than 40 shipyards in operation and is a centre for production of offshore oil drilling equipment and platforms. Most major suppliers have office or representatives in Batam ensuring readily available supply of most services and items required.

Services and facilities

- ✓ Tank Cleaning and sludge removal on arrival
- ✓ HFO removal on arrival
- ✓ Waste Oil/Sludge disposal on arrival
- ✓ Hold Cleaning on arrival
- ✓ Crew Services on arrival
- ✓ Crew change/Visitor service
- ✓ Crew service upon reactivation
- ✓ Garbage Collection and disposal
- ✓ Provision and Stores for Crew
- ✓ Removal of Perishable Food and Stores
- ✓ Spare Parts Storage
- ✓ Underwater Hull Inspection
- ✓ Underwater Hull Cleaning/Propeller polishing/repairs
- ✓ Hull External Maintenance
- ✓ Cargo Hold/Tank Maintenance & Coating
- ✓ Machinery and Equipment maintenance/repairs
- ✓ Steel renewal/Welding Work
- ✓ Heavy transport or lifting to/from vessels
- ✓ Marine Diesel Oil/HFO re-fuelling
- ✓ Fresh Water
- ✓ Tugs
- ✓ Fire Fighting Vessels
- ✓ Medevac & Helicopter Rescue



Safe Haven Singapore Pte Ltd
+65 9731 8922
layup@safehaven-singapore.com
www.safehaven-singapore.com



Batam Office

PT. Baruna Bahari Indonesia
(Safe Haven Maritime Pte Ltd subsidiary)
Dana Graha Building 3rd Floor
Jl Imam Bonjol, Nagoya, Batam Island, Indonesia
E-mail : layup@safehaven-singapore.com
URL : www.safehaven-singapore.com



Name : Alex Schultz
Mobile : +62-853-6516-2830
+65-9731-8922
E-mail : alex@safehaven-singapore.com



Name : Jeff Williams
Mobile : +62-812-6014-0330
E-mail : jeff@safehaven-singapore.com

